

HÄFELE

FURNITURE  
HANDLES  
DESIGN  
CLASSICS



# FURNITURE HANDLES DESIGN CLASSICS

JENS RISOM  
BODIL KJAER  
PAUL McCOBB  
AUGUST SCHATTE  
NANNA DITZEL  
MICHAEL GRAVES  
DIETER RAMS  
JASPER MORRISON

FURNITURE HANDLES / FURNITURE KNOBS /  
WARDROBE HOOKS

**— Rediscover  
design classics**



It is a sign of the highest cultural development when even everyday objects become aesthetic eye-catchers. This is impressively seen in the furniture handles design classics collection from Häfele. It presents furniture handles, furniture knobs and wardrobe hooks by leading designers and architects from decades past. The licensed reproductions are based on original models and drawings. Only minimal changes have been made when necessary due to new materials or production techniques.

The selection includes designs by German industrial designer Dieter Rams, “First Lady of Danish Design” Nanna Ditzel and postmodern product designer Michael Graves. It also features prominent proponents of American Mid-Century design, like Jens Risom and Paul McCobb – currently being rediscovered on international design platforms.

They have all created iconic designs that were not only masterpieces of yesterday, but of tomorrow as well. Modern classics synonymous with timeless aesthetics, individuality and quality that enrich furniture and interiors with style-defining design.



**JENS  
RISOM —**  
08



Page — 10



Page — 12



Page — 13



**BODIL  
KJAER —**  
16



Page — 18



Page — 18



## PAUL McCOBB — 22



Page — 24



Page — 25



Page — 26



Page — 27



Page — 28



Page — 30



Page — 32



Page — 33



## AUGUST SCHATTE — 36



Page — 38



Page — 39



**NANNA  
DITZEL —**  
40



Page — 42



Page — 44



Page — 44



Page — 45



Page — 45



**MICHAEL  
GRAVES —**  
48



Page — 50



Page — 51



Page — 52



Page — 53



Page — 55



Page — 55



Page — 57



Page — 57



## DIETER RAMS — 58



Page — 61



## JASPER MORRISON — 64



Page — 66



Page — 67



Page — 69



Page — 70





( 1 9 1 6 – 2 0 1 6 )

# JENS RISOM —

Jens Risom is one of the most famous designers of the American Mid-Century style.

Born in Copenhagen, he imported Scandinavian design to the US in the 1940s. The Risom Lounge Chair, designed in 1942, is legendary: due to the shortage of good materials, it was made of a mesh formed by parachute harnesses. The soft, flowing forms typical of the aesthetic of Scandinavian design style are integral to Risom's design language – as also seen in the handles recently reissued by Häfele. The three Mid-Century classics lend furniture an accent that's as elegant as it is personal.



— matt black



— gold coloured



— polished chrome plated

Finish	Dim. in mm	Hole spacing in mm	Cat. No.
matt black	70 x 54 x 28	32	102.04.101
gold coloured	70 x 54 x 28	32	102.04.102
polished chrome plated	70 x 54 x 28	32	102.04.100



»I developed an American  
version of the modern Scandi-  
navian home furnishings style.«

---

Jens Risom

— Jens Risom

— matt black



— gold coloured



— polished chrome plated



Finish	Dim. in mm	Hole spacing in mm	Cat. No.
matt black	158 x 23 x 24	96	102.04.121
gold coloured	158 x 23 x 24	96	102.04.122
polished chrome plated	158 x 23 x 24	96	102.04.120



— black / brushed brass plated



— matt chrome plated / black



— polished chrome plated / polished chrome plated

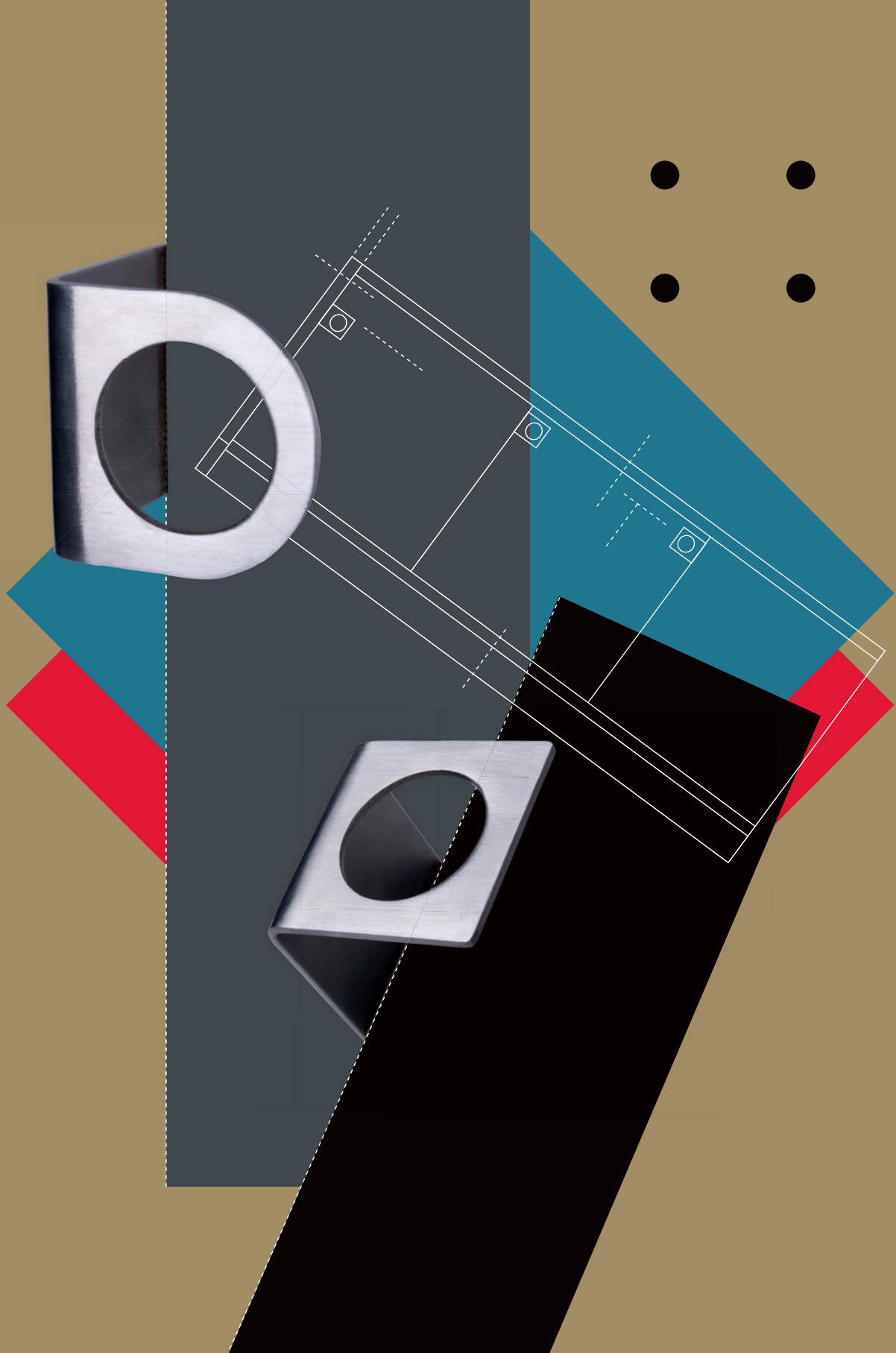
Finish	Dim. in mm	Hole spacing in mm	Cat. No.
black / brushed brass plated	115 x 40 x 39	16	102.04.110
matt chrome plated / black	115 x 40 x 39	16	102.04.112
polished chrome plated / polished chrome plated	115 x 40 x 39	16	102.04.111



— Jens Risom









( 1 9 3 2 )

# BODIL KJAER —

Free from anything superfluous, the furniture handle by Bodil Kjaer delivers excellent utility with a modern aesthetic. Danish designer and architect Bodil Kjaer is currently experiencing a much-touted comeback. International manufacturers are reissuing her desks, filing cabinets, garden furniture, lamps and glass vases from the 1950s and 1960s. Bodil Kjaer's design ambition of "finding solutions that make people's life easier" sounds more contemporary than ever in our time.



— satin stainless steel brushed



— satin stainless steel brushed

Finish	Dim. in mm	Hole spacing in mm	Cat. No.
satin stainless steel brushed	44 x 50	20	102.04.130
satin stainless steel brushed	44 x 50	20	102.04.131



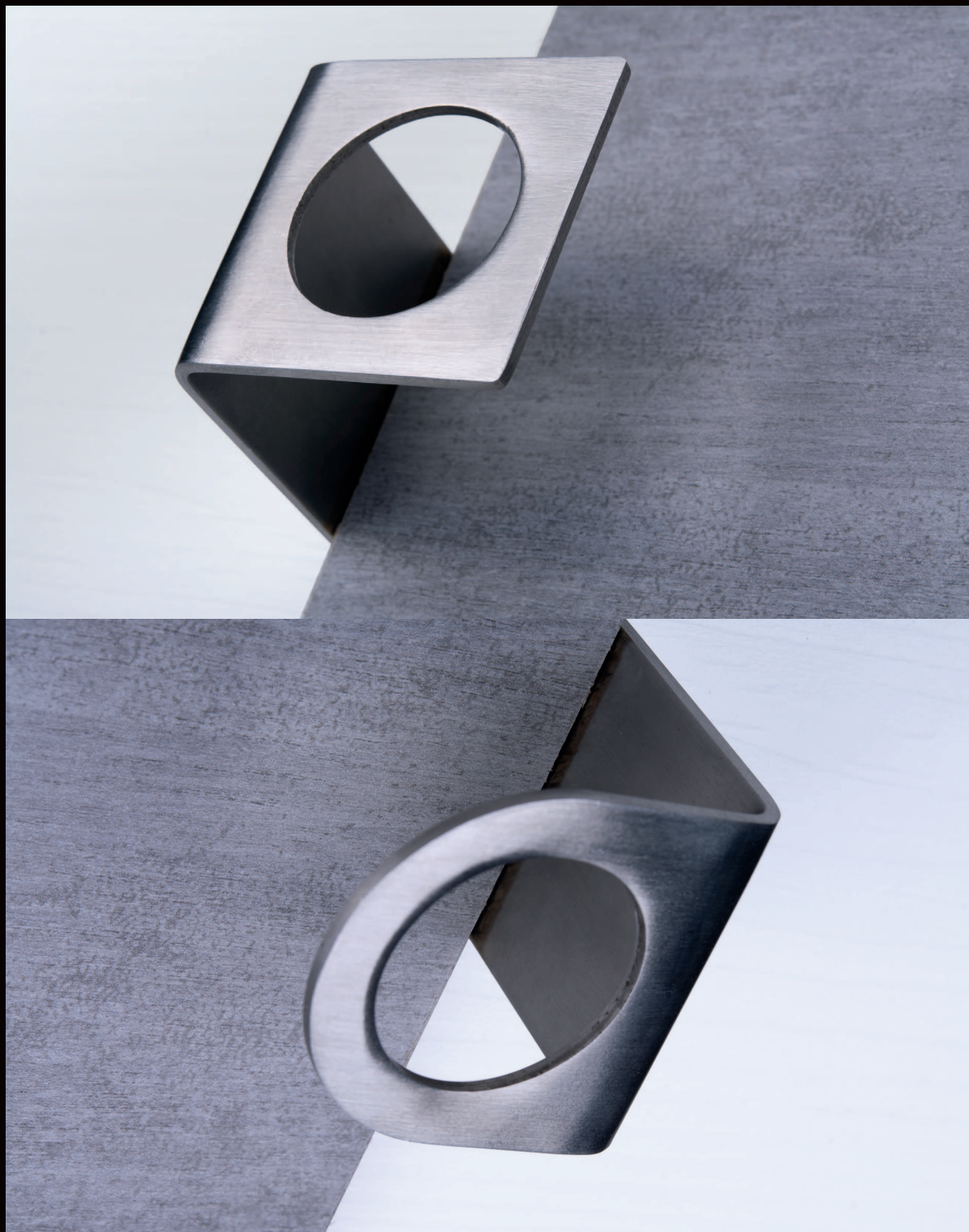


»With my designs,  
I want to find solutions  
that make people's  
life easier.«

---

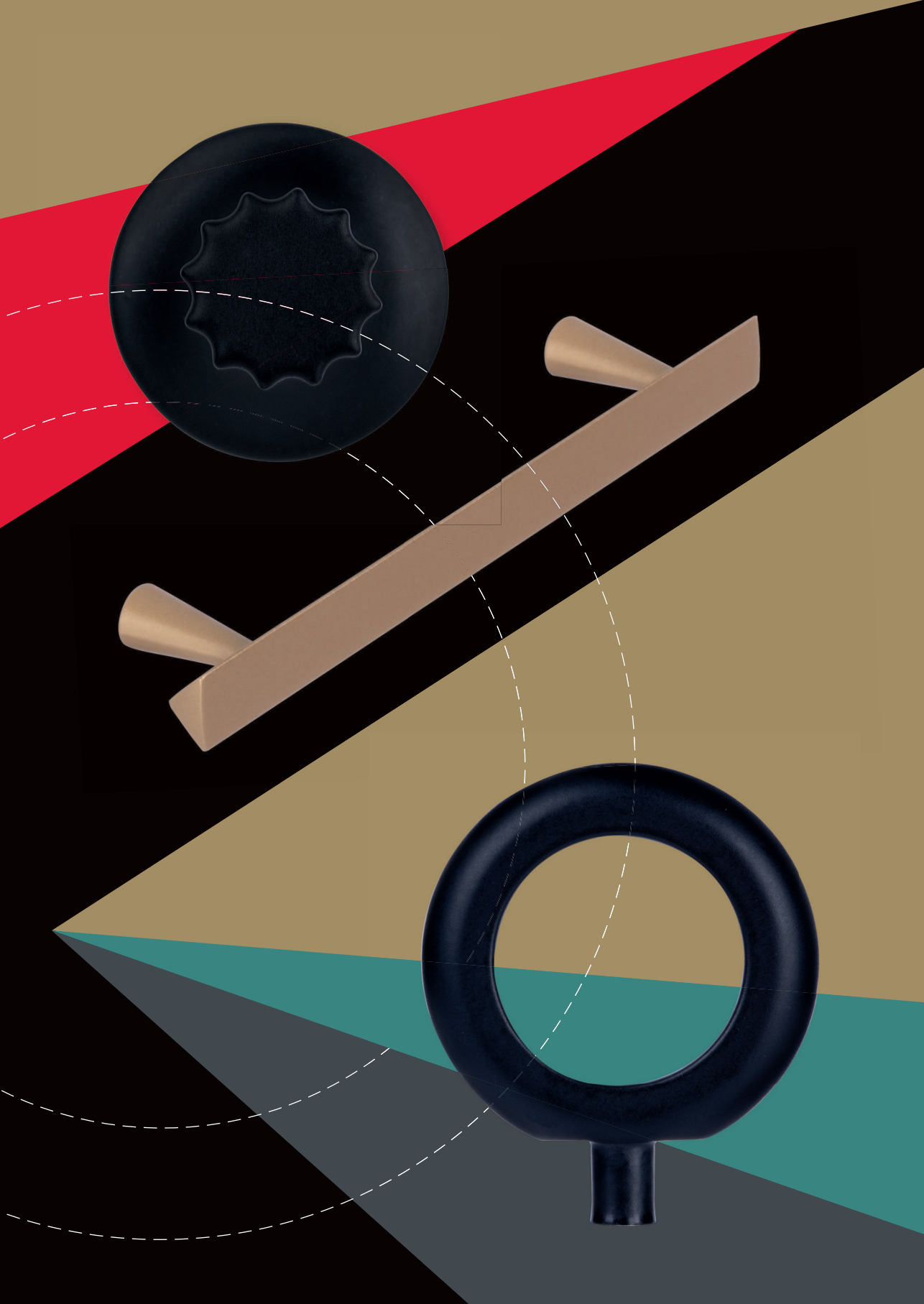
Bodil Kjaer

— Bodil Kjaer











( 1 9 1 7 - 1 9 6 9 )

# PAUL McCOBB —

Paul McCobb was one of the most influential figures of the American Mid-Century style. His tables, shelves and stools – designed for the compact buildings of the post-war period – became the most-sold furniture in the US in the 1950s and 1960s. Häfele offers a comprehensive collection of handles and knobs created by the designer for the Predictor, Planner, Grand Rapids and Linear Group furniture series. The marriage of minimalism and elegance shows McCobb's unique signature style. Despite his formal rigour, McCobb lends his furniture an unmistakeable character.



— matt black



— gold coloured



— polished chrome plated

Finish	Dim. in mm	Cat. No.
matt black	25 x 22	102.04.210
gold coloured	25 x 22	102.04.211
polished chrome plated	25 x 22	102.04.212



— matt black



— gold coloured



— polished chrome plated

Finish	Dim. in mm	Cat. No.
matt black	12 x 19	102.04.220
gold coloured	12 x 19	102.04.221
polished chrome plated	12 x 19	102.04.222



— matt black



— gold coloured



— polished chrome plated

Finish	Dim. in mm	Cat. No.
matt black	18 x 25	102.04.190
gold coloured	18 x 25	102.04.191
polished chrome plated	18 x 25	102.04.192





— matt black



— gold coloured



— polished chrome plated

Finish	Dim. in mm	Cat. No.
matt black	20 x 29	102.04.200
gold coloured	20 x 29	102.04.201
polished chrome plated	20 x 29	102.04.202



— matt black



— gold coloured



— polished chrome plated

Oberfläche	Dim. in mm	Pin in mm	Cat. No.
matt black	32 x 9	7	102.04.181
gold coloured	32 x 9	7	102.04.182
polished chrome plated	32 x 9	7	102.04.180



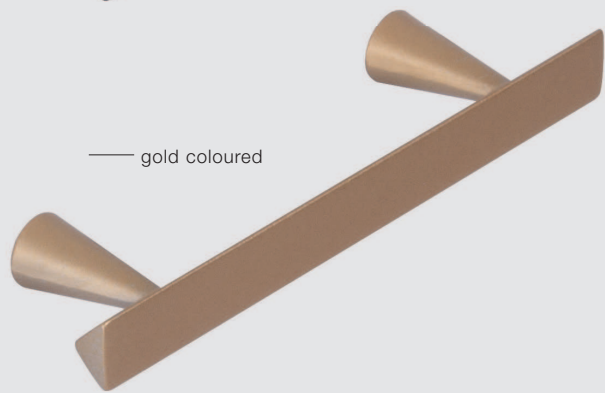
»My design ambition is based on the unity of form, clear lines and true organic function.«

---

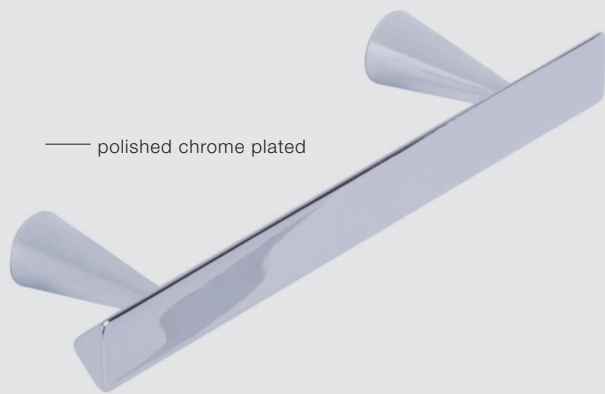
Paul McCobb



— matt black

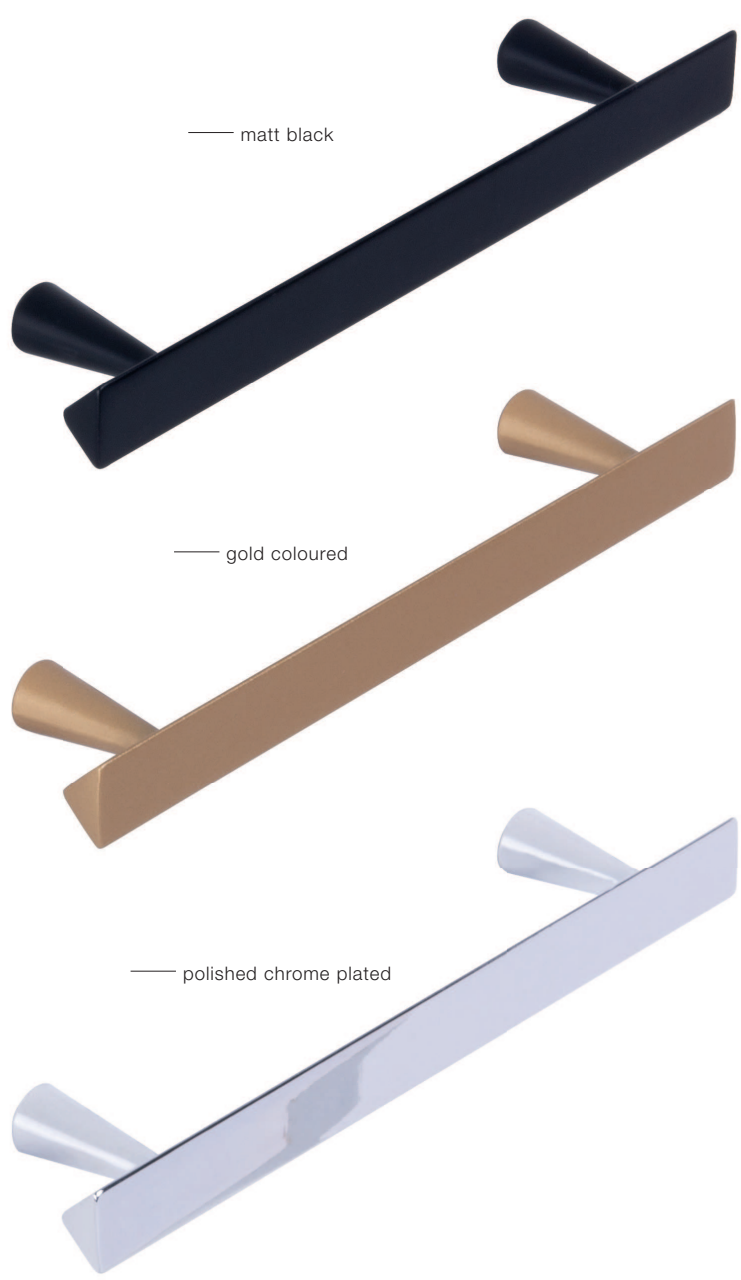


— gold coloured



— polished chrome plated

Finish	Dim. in mm	Hole spacing in mm	Cat. No.
matt black	92 x 10 x 23	64	102.04.141
gold coloured	92 x 10 x 23	64	102.04.142
polished chrome plated	92 x 10 x 23	64	102.04.140



Finish	Dim. in mm	Hole spacing in mm	Cat. No.
matt black	128 x 12 x 25	96	102.04.151
gold coloured	128 x 12 x 25	96	102.04.152
polished chrome plated	128 x 12 x 25	96	102.04.150



— matt black



— gold coloured

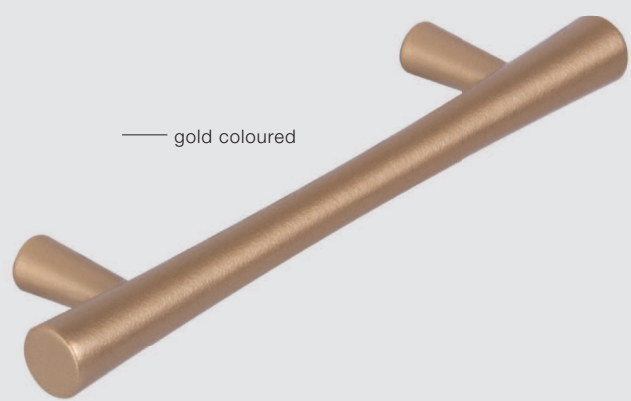


— polished chrome plated

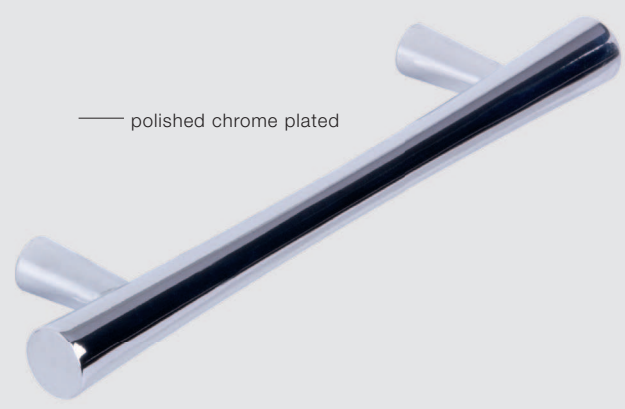
Finish	Dim. in mm	Hole spacing in mm	Cat. No.
matt black	111 x 9 x 26	64	102.04.171
gold coloured	111 x 9 x 26	64	102.04.172
polished chrome plated	111 x 9 x 26	64	102.04.170



— matt black



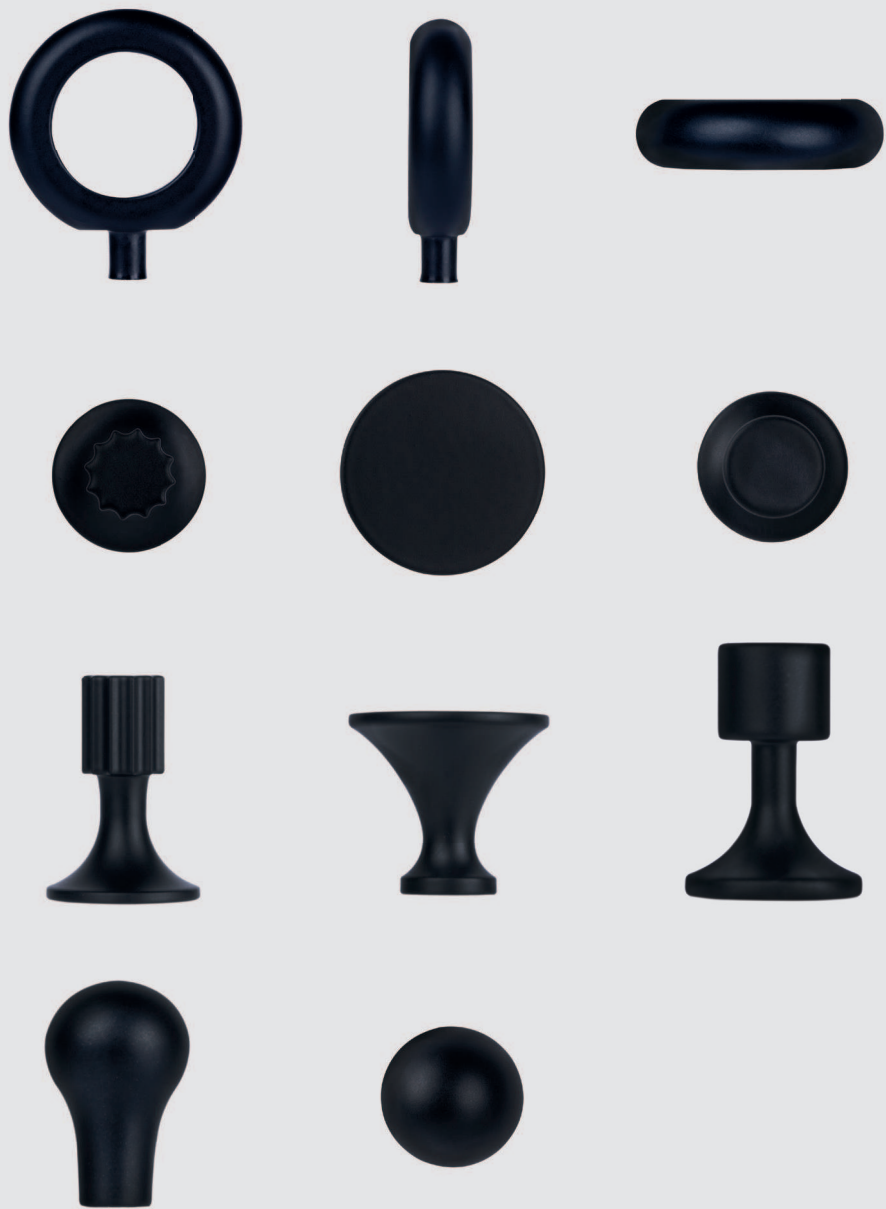
— gold coloured



— polished chrome plated

Finish	Dim. in mm	Hole spacing in mm	Cat. No.
matt black	138 x 12 x 29	96	102.04.161
gold coloured	138 x 12 x 29	96	102.04.162
polished chrome plated	138 x 12 x 29	96	102.04.160













# AUGUST SCHATTE —

August Schatte was a zinc die cast manufacturer in Germany. The recently reissued wardrobe hooks are based on a classic wardrobe created in the 1940s. Free of anything superfluous, the functional design speaks for itself and continues to look timelessly modern, even today. The surfaces in polished chrome, matt gold or matt black lend the wardrobe hooks their own aesthetic and are suitable for any atmosphere, depending on the version.



— matt black



— gold coloured

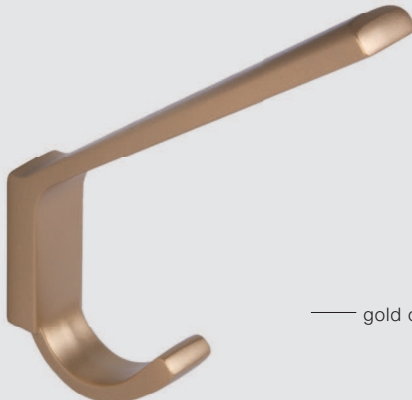


— polished chrome plated

Finish	Dim. in mm	Hole spacing in mm	Cat. No.
matt black	20 x 60 x 56	20	102.04.231
gold coloured	20 x 60 x 56	20	102.04.232
polished chrome plated	20 x 60 x 56	20	102.04.230



— matt black



— gold coloured



— polished chrome plated

Finish	Dim. in mm	Hole spacing in mm	Cat. No.
matt black	19 x 141 x 113	20	102.04.241
gold coloured	19 x 141 x 113	20	102.04.242
polished chrome plated	19 x 141 x 113	20	102.04.240







( 1 9 2 3 - 2 0 0 5 )

# NANNA DITZEL —

Welcome to the Seventies: the wardrobe hooks and furniture knobs by Nanna Ditzel bring back the aesthetics of the 1970s.

Formed from wood, they grace walls and furniture in bright Pop Art colours. Nanna Ditzel is considered the “First Lady of Danish Design”. Over the course of her long career, she has designed furniture, jewellery, dishes, cutlery, fabrics and even storage jars for the kitchen. Her classic “Egg Chair” is probably her most well-known work and today is considered an icon: The rounded wicker chair hangs from chains fastened to the ceiling.

— Nanna Ditzel



— black



— dark grey



— light grey



— red



— terracotta



— turquoise green



— turquoise blue

Finish	Dim. in mm	Cat. No.
black	45 x 25	102.04.251
dark grey	45 x 25	102.04.253
light grey	45 x 25	102.04.252
red	45 x 25	102.04.250
terracotta	45 x 25	102.04.254
turquoise green	45 x 25	102.04.255
turquoise blue	45 x 25	102.04.256



»Three steps ahead and two back still means that I've taken a step in the right direction.«

---

Nanna Ditzel



— Nanna Ditzel



— black



— dark grey



— light grey



— red



— terracotta



— turquoise green



— turquoise blue

Finish	Dim. in mm	Cat. No.
black	30 x 40	102.04.261
dark grey	30 x 40	102.04.263
light grey	30 x 40	102.04.262
red	30 x 40	102.04.260
terracotta	30 x 40	102.04.264
turquoise green	30 x 40	102.04.265
turquoise blue	30 x 40	102.04.266



— black



— dark grey



— light grey



— red



— terracotta

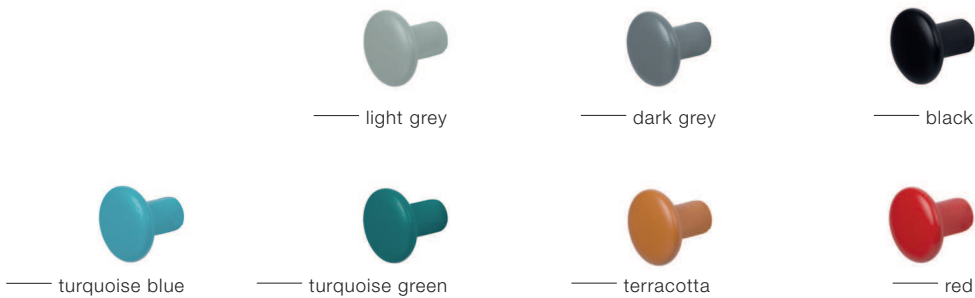


— turquoise green



— turquoise blue

Finish	Dim. in mm	Cat. No.
black	55 x 49	102.04.271
dark grey	55 x 49	102.04.273
light grey	55 x 49	102.04.272
red	55 x 49	102.04.270
terracotta	55 x 49	102.04.274
turquoise green	55 x 49	102.04.275
turquoise blue	55 x 49	102.04.276



Finish	Dim. in mm	Cat. No.
black	30 x 28	102.04.281
dark grey	30 x 28	102.04.283
light grey	30 x 28	102.04.282
red	30 x 28	102.04.280
terracotta	30 x 28	102.04.284
turquoise green	30 x 28	102.04.285
turquoise blue	30 x 28	102.04.286



Finish	Dim. in mm	Cat. No.
black	60 x 52	102.04.291
dark grey	60 x 52	102.04.293
light grey	60 x 52	102.04.292
red	60 x 52	102.04.290
terracotta	60 x 52	102.04.294
turquoise green	60 x 52	102.04.295
turquoise blue	60 x 52	102.04.296











( 1 9 3 4 - 2 0 1 5 )

# MICHAEL GRAVES —

Michael Graves was one of the most important architects and designers of the postmodern period. Aside from 350 buildings, Graves also designed many everyday items. The most well-known is his kettle with the vibrant, whistling little bird. The recently reissued furniture handles by Michael Graves turn objects in everyday use into aesthetic eye-catchers. With well-proportioned forms and exquisite materials like chrome, stainless steel and leather, they not only attract looks, but also convey a feeling of quality, right down to the tips of the fingers.

— Michael Graves



— matt black



— gold coloured



— polished chrome plated

Finish	Dim. in mm	Hole spacing in mm	Cat. No.
matt black	45 x 33 x 17	16	102.04.301
gold coloured	45 x 33 x 17	16	102.04.302
polished chrome plated	45 x 33 x 17	16	102.04.300



— matt black



— gold coloured

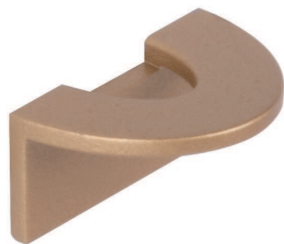


— polished chrome plated

Finish	Dim. in mm	Hole spacing in mm	Cat. No.
matt black	92 x 35 x 17	64	102.04.311
gold coloured	92 x 35 x 17	64	102.04.312
polished chrome plated	92 x 35 x 17	64	102.04.310



— matt black



— gold coloured



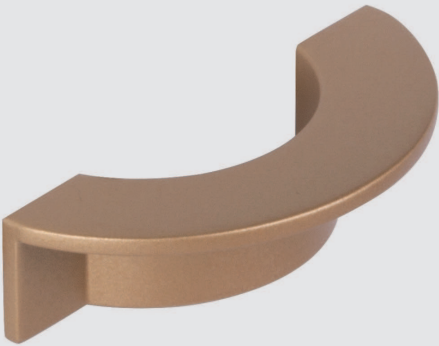
— polished chrome plated

Finish	Dim. in mm	Hole spacing in mm	Cat. No.
matt black	36 x 18 x 25	15	102.04.321
gold coloured	36 x 18 x 25	15	102.04.322
polished chrome plated	36 x 18 x 25	15	102.04.320

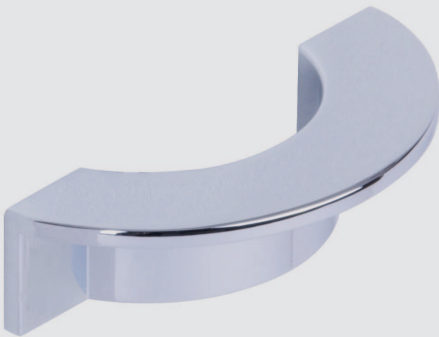




— matt black



— gold coloured



— polished chrome plated

Finish	Dim. in mm	Hole spacing in mm	Cat. No.
matt black	79 x 20 x 34	64	102.04.331
gold coloured	79 x 20 x 34	64	102.04.332
polished chrome plated	79 x 20 x 34	64	102.04.330

— Michael Graves






— polished chrome plated



— polished chrome plated

Finish	Dim. in mm	Hole spacing in mm	Cat. No.
polished chrome plated	31 x 25 x 51	-	102.04.340
polished chrome plated	132 x 25 x 51	96	102.04.350



— Michael Graves

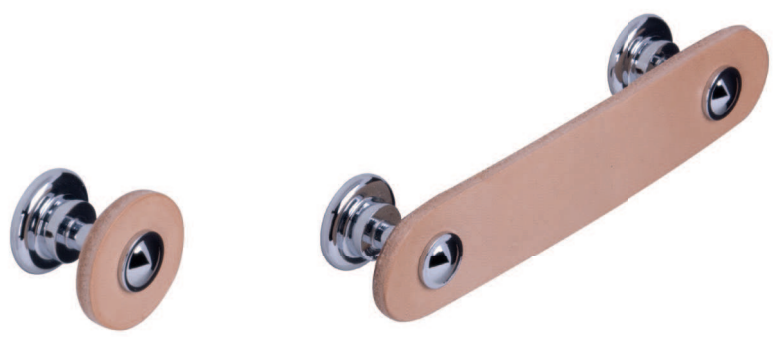
»My favourite project is  
always the next one.«

---

Michael Graves



— brown leather, polished chrome plated

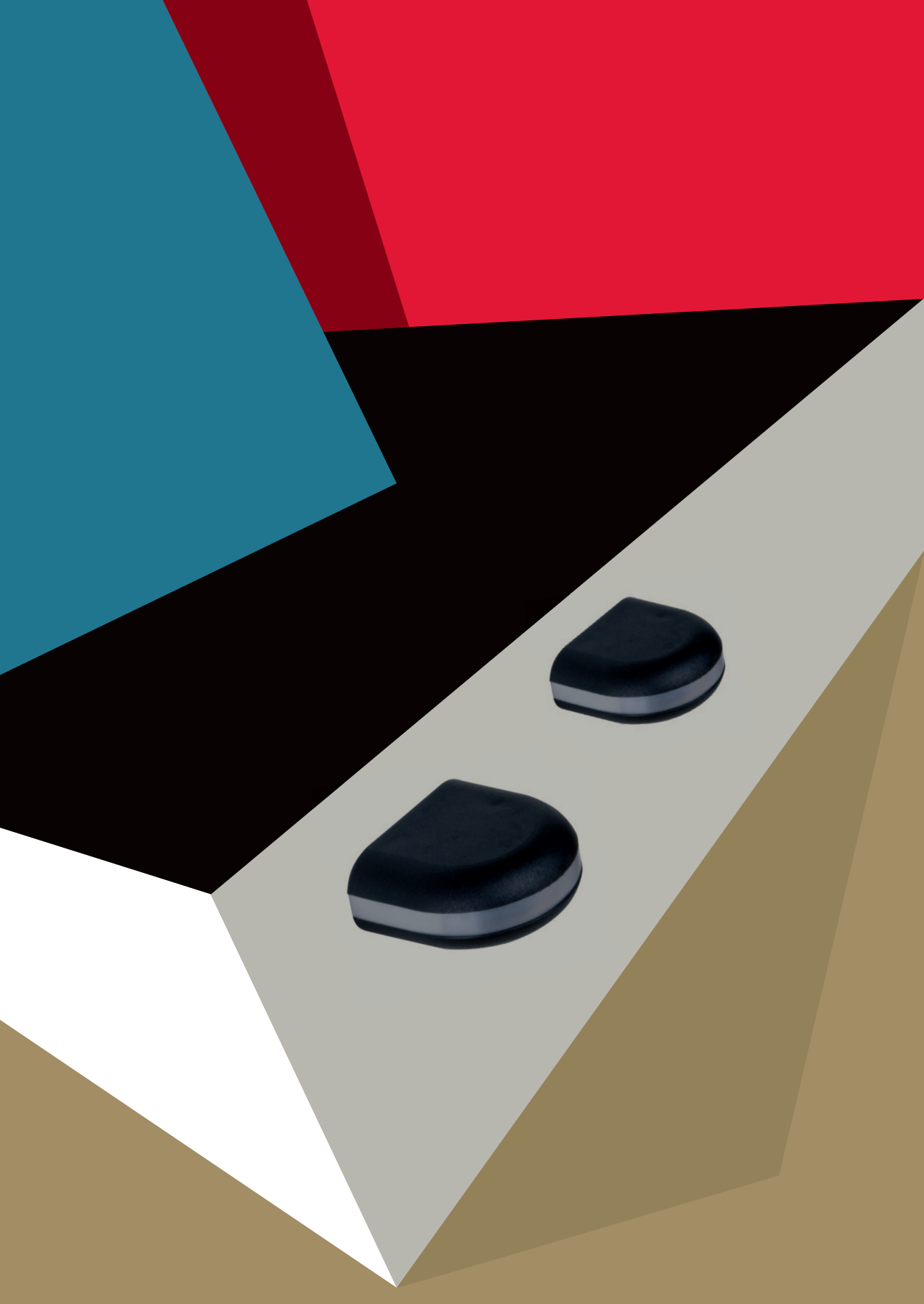


— natural coloured leather, polished chrome plated



— anthracite coloured leather, polished chrome plated

Finish	Dim. in mm	Hole spacing in mm	Cat. No.
brown leather, polished chrome plated	29 x 29	-	102.04.360
natural coloured leather, polished chrome plated	29 x 29	-	102.04.361
anthracite coloured leather, polished chrome plated	29 x 29	-	102.04.362
brown leather, polished chrome plated	132 x 26 x 29	96	102.04.370
natural coloured leather, polished chrome plated	132 x 26 x 29	96	102.04.371
anthracite coloured leather, polished chrome plated	132 x 26 x 29	96	102.04.372







( 1 9 3 2 )

# DIETER RAMS —

Dieter Rams is the most iconic German industrial designer. His radios for electronics manufacturer Braun are in the collection at the Museum of Modern Art in New York and – just like his furniture – are always conceived exclusively from the user's perspective. Form follows function. Rams's designs are intended to serve and not to make demands. This design philosophy is also reflected in the furniture handle by Dieter Rams: freed from anything superfluous, it consists of a simple form and a surface made of thermoplastic that feels good to the touch. Dieter Rams's handles lend furniture a timeless quality. An almost meditative beauty lies in the great clarity of his pieces.

— Dieter Rams





— matt black / polished chrome plated

Finish	Dim. in mm	Hole spacing in mm	Cat. No.
matt black / polished chrome plated	40 x 17 x 35	32	102.04.380

— Dieter Rams



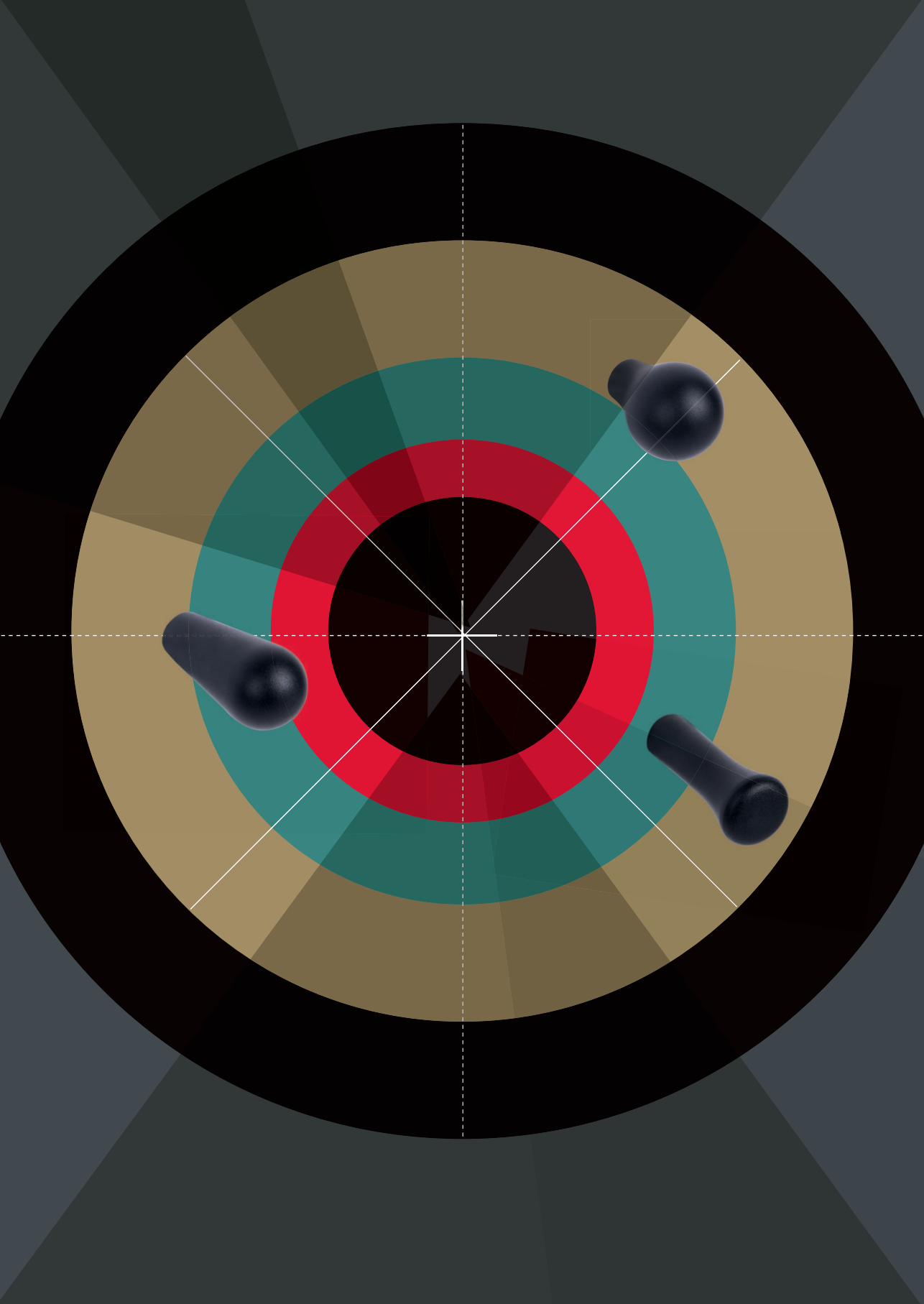


»Good design is as little  
design as possible.«

---

Dieter Rams









( 1 9 5 9 )

# JASPER MORRISON —

Jasper Morrison, one of the most successful designers of our time, coined the term “supernormal”. It means that good design should be slick, simple and masterfully reduced to the essentials, so that an object’s use is intuitively understood. Accordingly, the wardrobe hooks and furniture knobs made of anodized aluminium designed by Morrison embody pure form. There is nothing embellished, distracting or superfluous about them. In Morrison’s view, the pure form of objects crystallises over a long period and will continue to outlast changing fashions into the future.



— black anodized



— gold coloured anodized



— natural anodized

Finish	Dim. in mm	Cat. No.
black anodized	16 x 32	102.04.391
gold coloured anodized	16 x 32	102.04.392
natural anodized	16 x 32	102.04.390



— black anodized



— gold coloured anodized



— natural anodized

Finish	Dim. in mm	Cat. No.
black anodized	14 x 32	102.04.401
gold coloured anodized	14 x 32	102.04.402
natural anodized	14 x 32	102.04.400



— Jasper Morrison

»The quality of design  
should be conveyed less  
through form, but rather  
more through use.«

---

Jasper Morrison



— black anodized



— gold coloured anodized



— natural anodized

Finish	Dim. in mm	Hole spacing in mm	Cat. No.
black anodized	34 x 90 x 34	20	102.04.421
gold coloured anodized	34 x 90 x 34	20	102.04.422
natural anodized	34 x 90 x 34	20	102.04.420

— Jasper Morrison



— black anodized



— gold coloured anodized



— natural anodized

Finish	Dim. in mm	Cat. No.
black anodized	26 x 34	102.04.411
gold coloured anodized	26 x 34	102.04.412
natural anodized	26 x 34	102.04.410





